

2. 危旧房加固项目圈梁构造柱做法示意图选集

- 说明：1、长墙、短墙连接处的 T 字墙或 L 型墙，设置配筋砂浆带楔子见示意图（1）；
- 2、 $\Phi 6@200$ 箍筋弯钩后与纵筋焊接或绑扎；
- 3、硬檐挑出宽度 $L \leq 1/2$ 房间径深；
- 4、所有砂浆带必须做好养护。

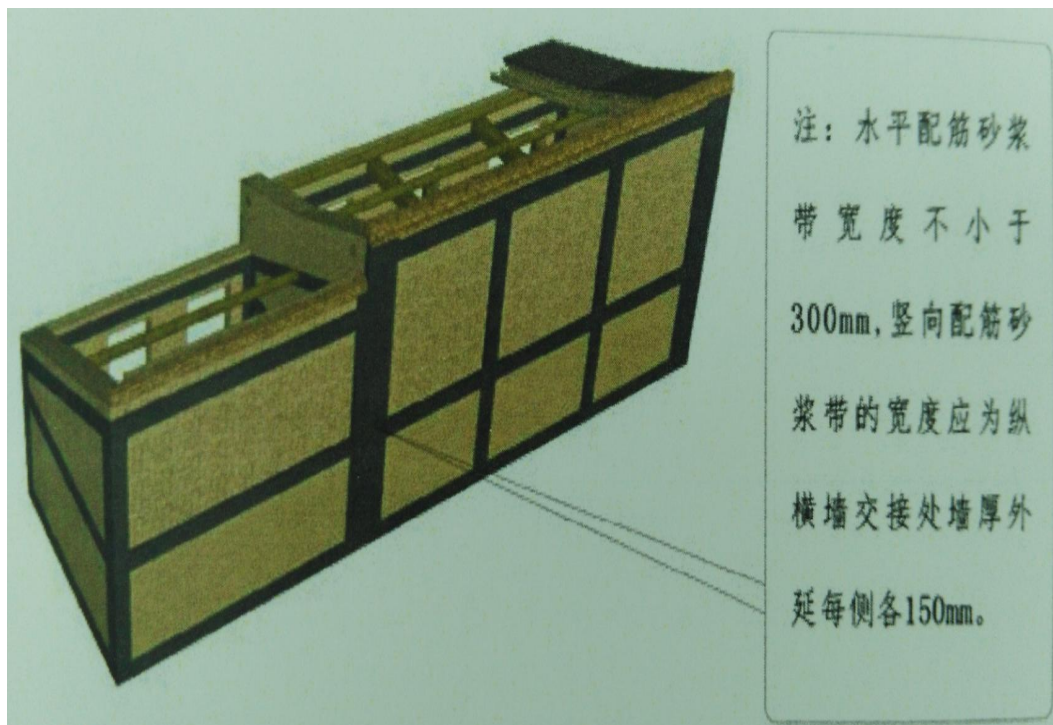


图 1：住房与耳房相连时配筋砂浆带设置示意

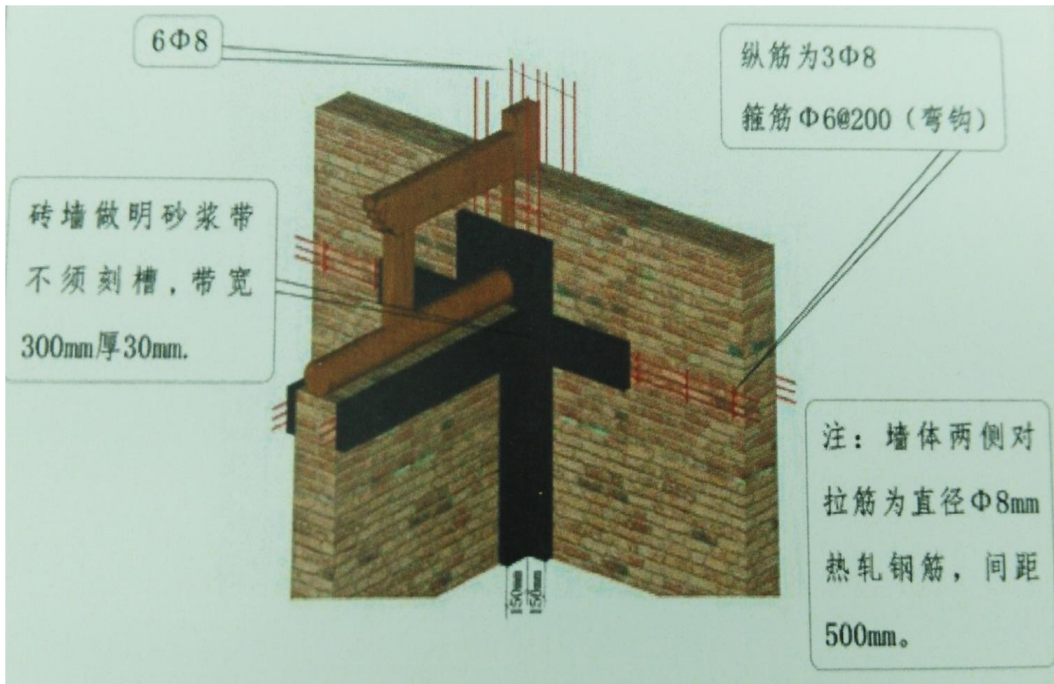


图 2: 砖墙表面外设配筋砂浆示意

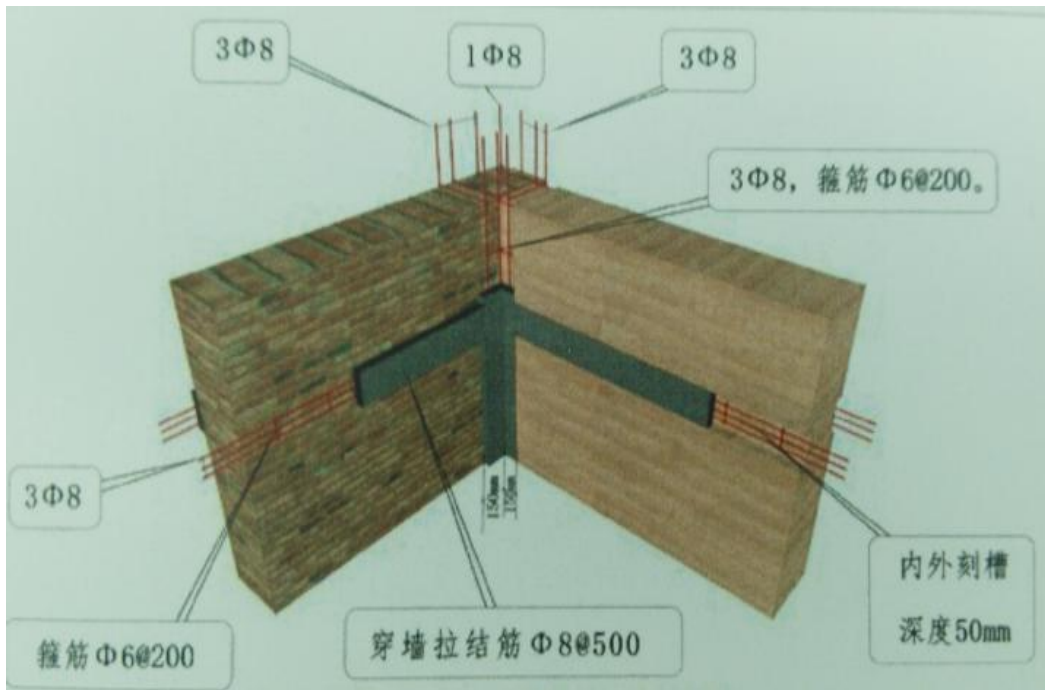


图 3: 砖墙-土墙交接处外设配筋砂浆带示意

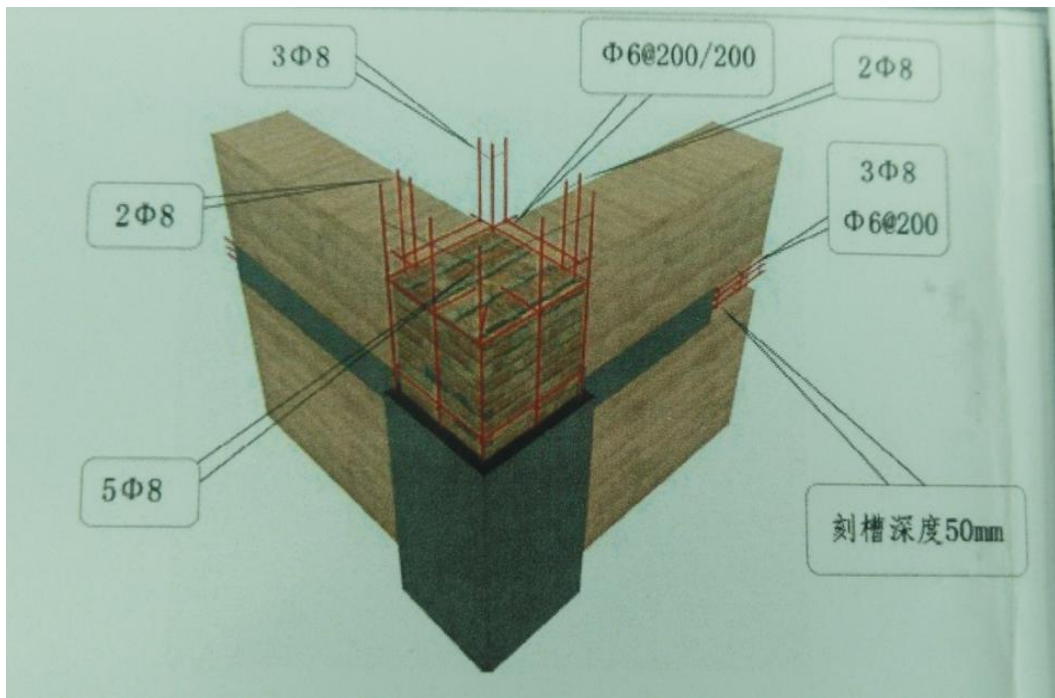


图 4：“四角硬”角部配筋砂浆带示意（外侧）墙砖柱

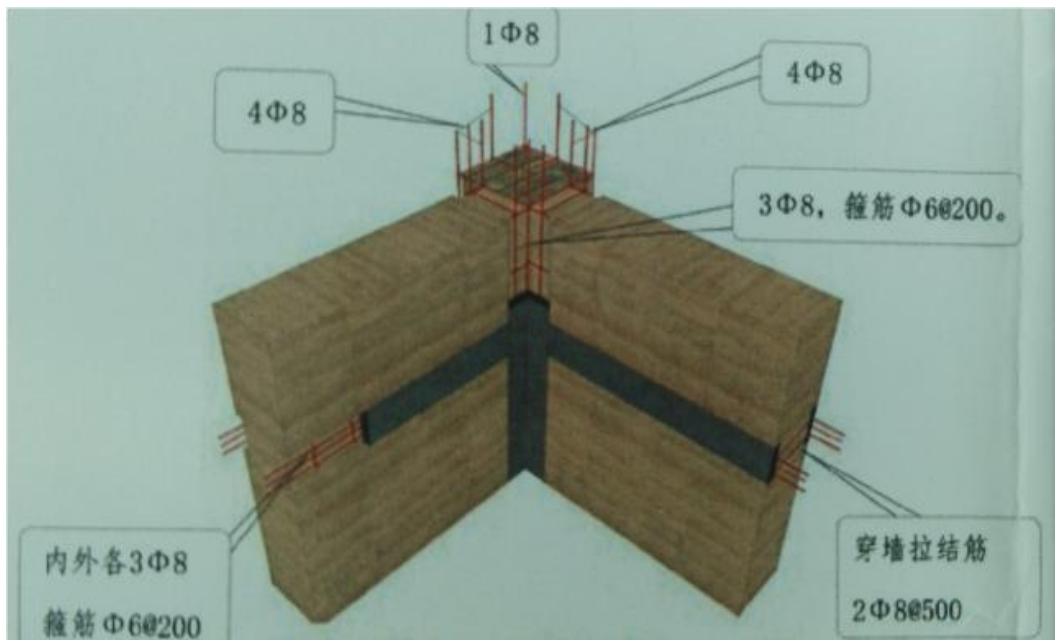


图 5：“四角硬”角部配筋砂浆带示意（内侧）

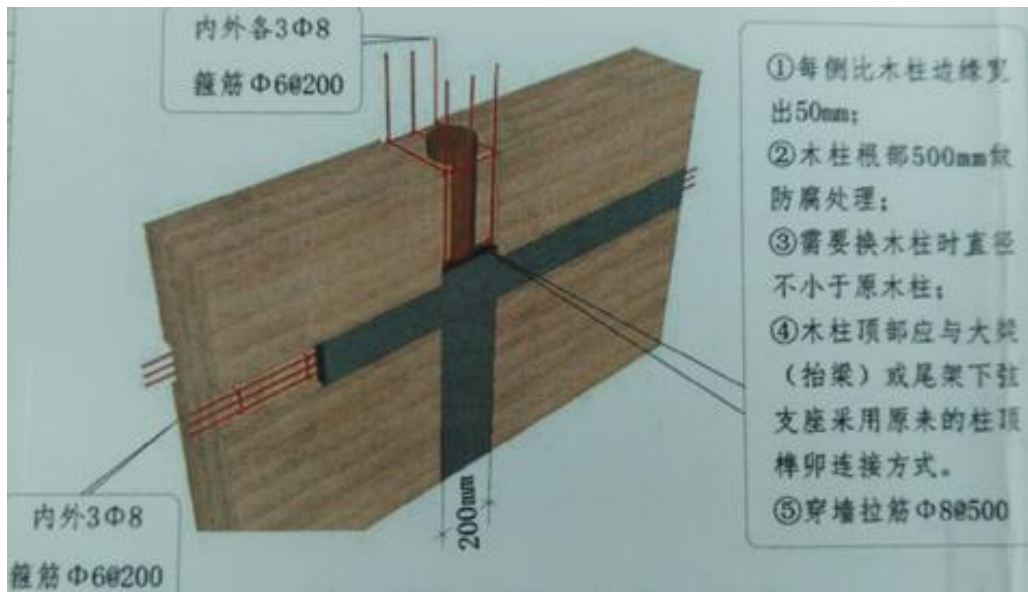


图 6: 土墙内有木构造柱时配筋砂浆带示意

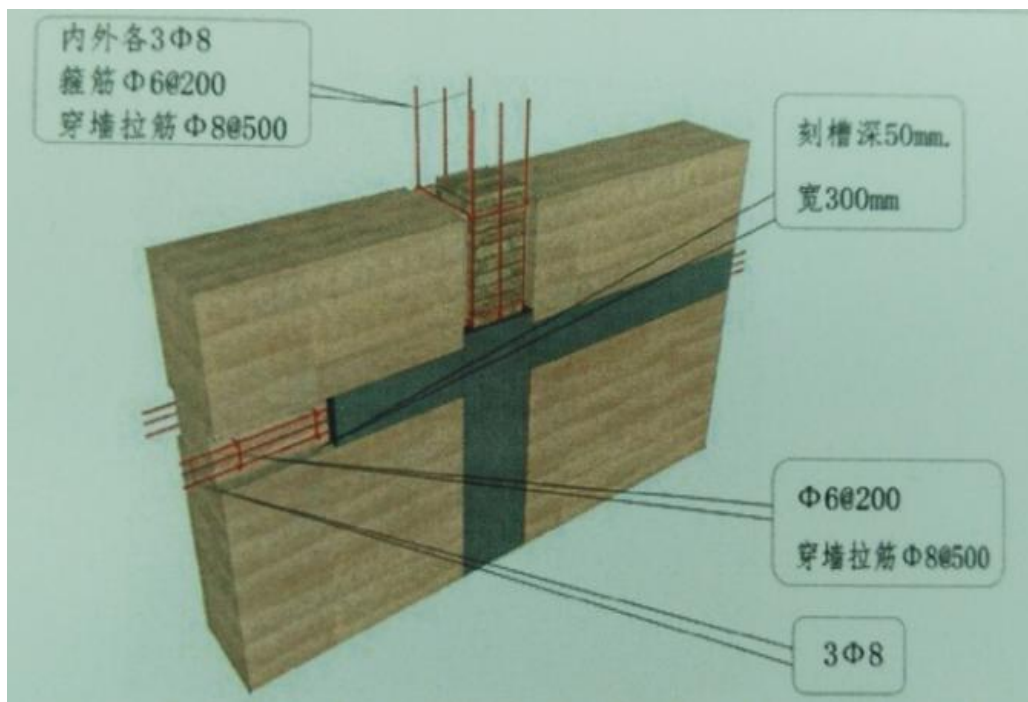


图 7: 土墙内有砖构造柱时配筋砂浆带示意

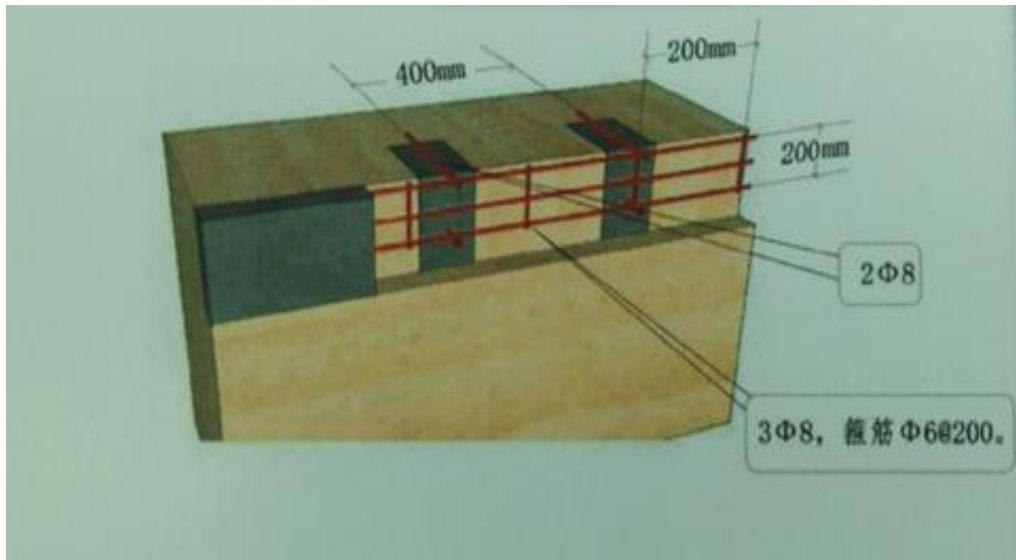
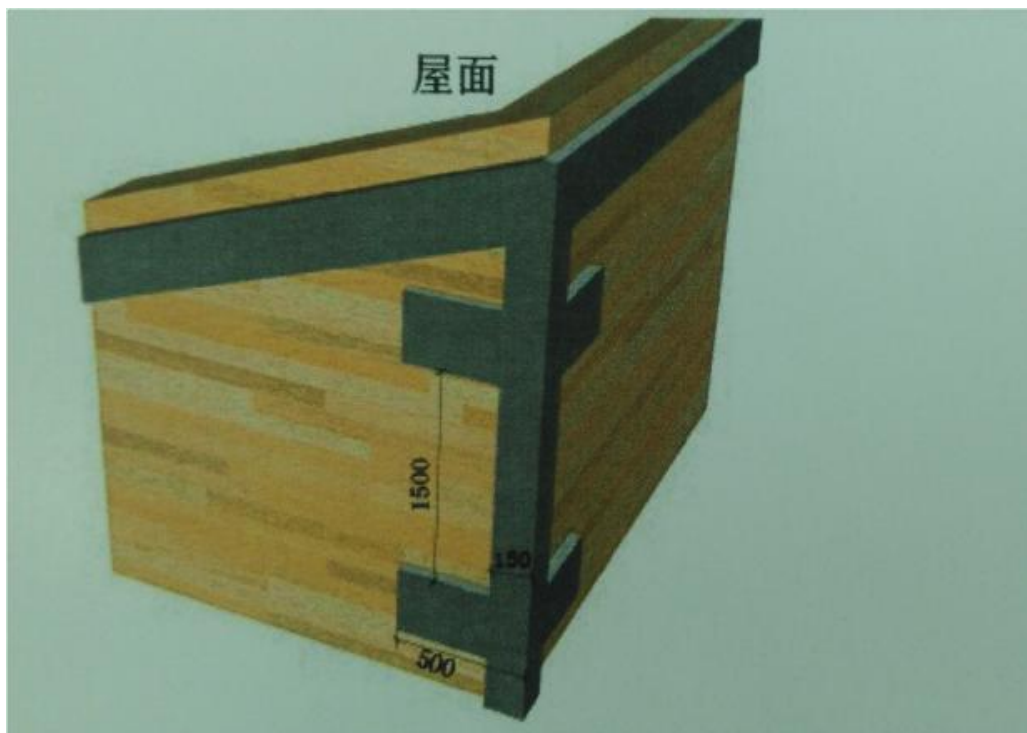
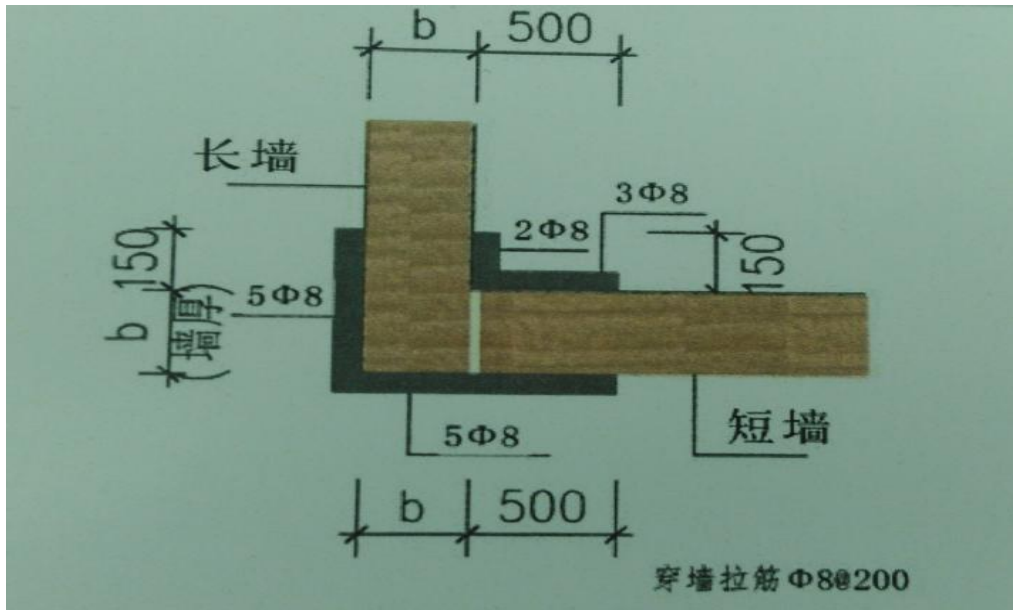


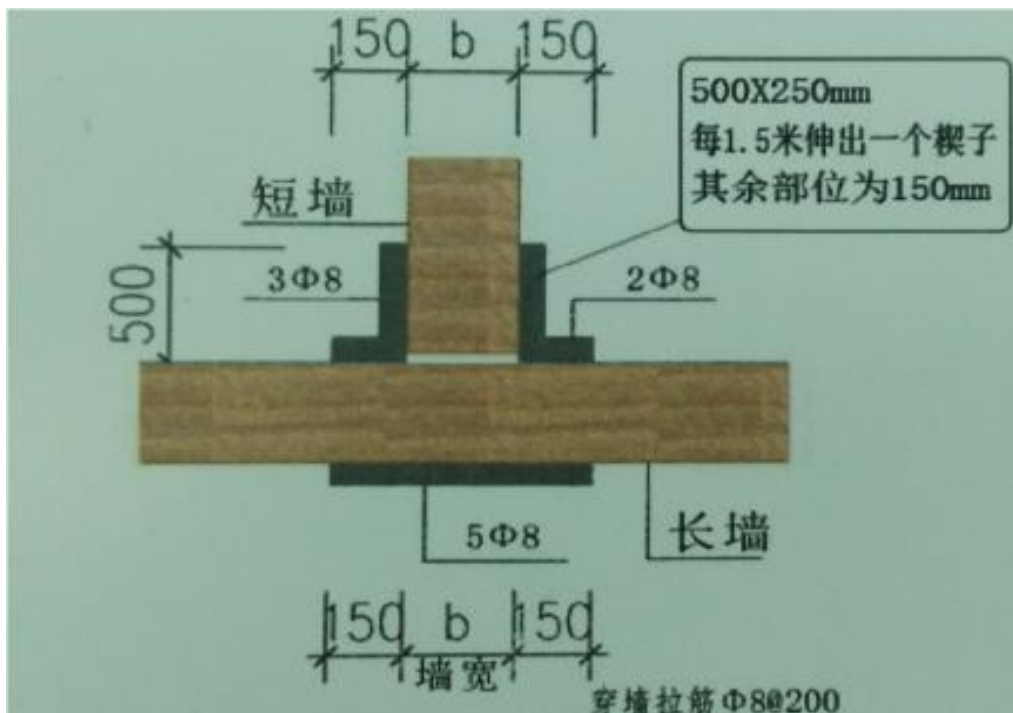
图 8: 土墙单侧做混凝土暗圈梁-销键示意



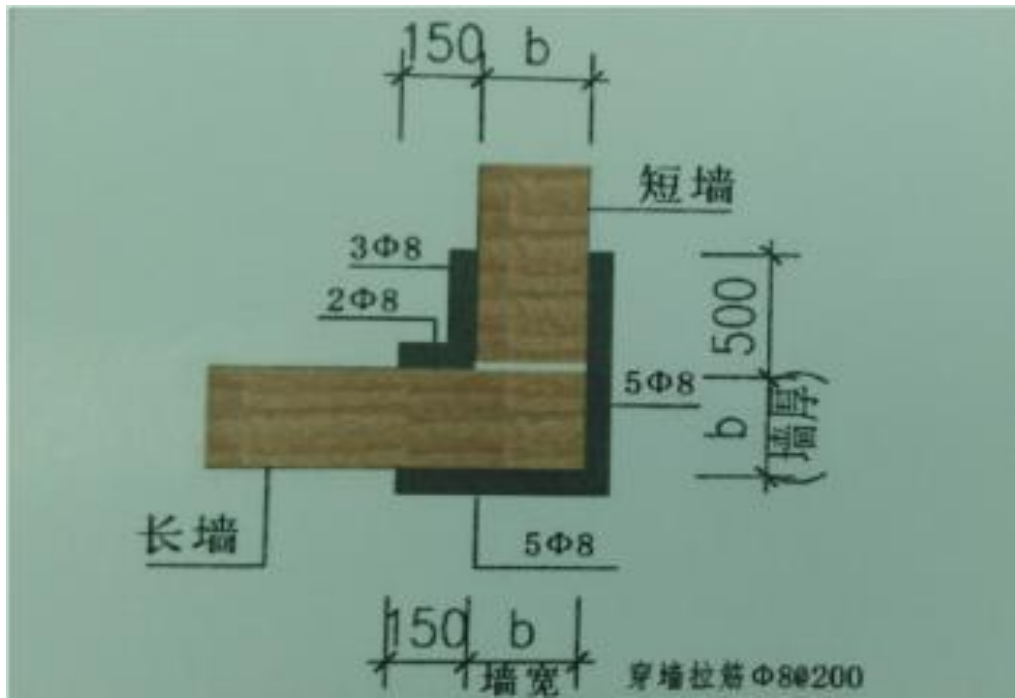
长短墙契子示意图 (配筋见平面图)



长短墙交接处设配筋砂浆带示意图 A



长短墙交接处设配筋砂浆带示意图 B



长短墙交接处设配筋砂浆带示意图 C